

Hold On Loosely

- R. Barnes
- J. Carlisi
- J. Peterik

From the album "Wild-Eyed Southern Boys"
by 38 Special (1981)

Bass part by
Larry Junstrom

Intro
♩ = 125

Elec. Bass

(1st Verse)

(Chorus)

(2nd Verse)

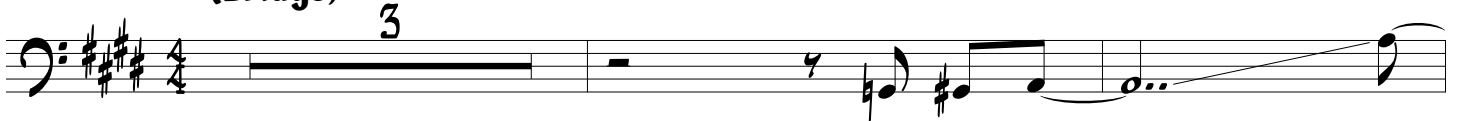
Hold On Loosely



(Chorus)



(Bridge)



(3rd Verse)



(Chorus)



Hold On Loosely



(Chorus)



(Guitar Solo)



(Chorus)



Hold On Loosely

The first two measures of the bass line are written in a key signature of three sharps (F#, C#, G#) and a 4/4 time signature. The first measure contains a half note G2, a quarter note A2, a quarter note B2, and a half note C3. The second measure contains a quarter note D3, a quarter note E3, a quarter note F#3, a quarter note G#3, a quarter note A3, a quarter note B3, a quarter note C4, and a half note D4.

(Guitar Solo 2)

The third and fourth measures of the bass line continue the melodic line. The third measure contains a half note E4, a quarter note F#4, a quarter note G#4, and a half note A4. The fourth measure contains a quarter note B4, a quarter note C5, a quarter note D5, a quarter note E5, a quarter note F#5, a quarter note G#5, a quarter note A5, and a half note B5.

(Guitar Solo 3)

The fifth and sixth measures of the bass line continue the melodic line. The fifth measure contains a half note C6, a quarter note D6, a quarter note E6, and a half note F#6. The sixth measure contains a quarter note G#6, a quarter note A6, a quarter note B6, a quarter note C7, a quarter note D7, a quarter note E7, a quarter note F#7, and a half note G7.

(Guitar Solo 4)

The seventh and eighth measures of the bass line continue the melodic line. The seventh measure contains a half note A7, a quarter note B7, a quarter note C8, and a half note D8. The eighth measure contains a quarter note E8, a quarter note F#8, a quarter note G#8, a quarter note A8, a quarter note B8, a quarter note C9, a quarter note D9, and a half note E9.