

# Foreign Language

- H. Gruzman  
- J. Lyell

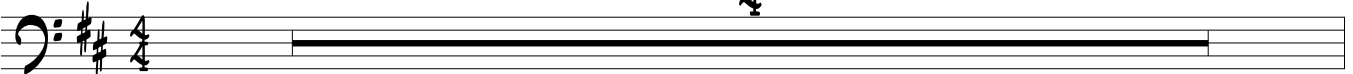
From the single "Foreign Language"  
by Flight Facilities featuring Jess (2011)

Bass part by  
Marcel Yamoumi

♩ = 125 (Intro)

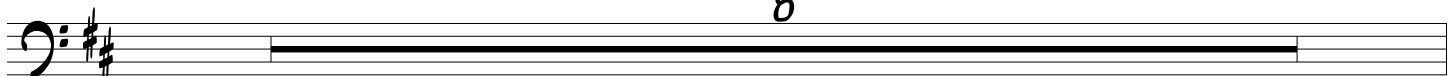
4

Elec. Bass



(1st Verse)

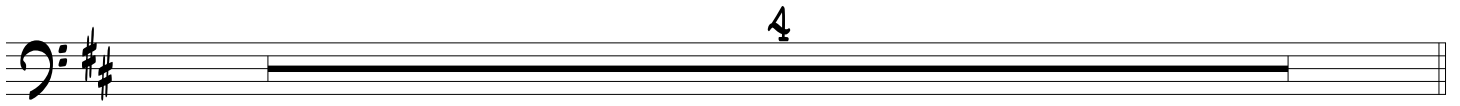
8



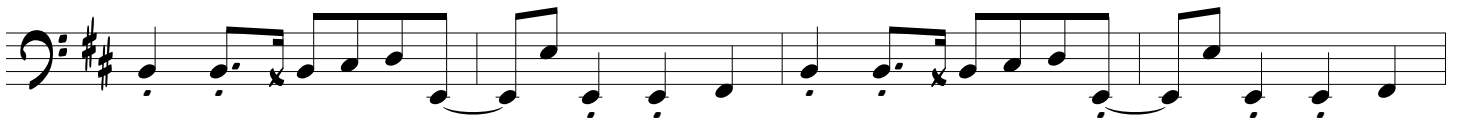
(Chorus)



# Foreign Language



## (2nd Verse)



## (Chorus)



# Foreign Language

The first section consists of three staves of music. The first staff begins with a bass clef, a key signature of two sharps (D major), and a 4/4 time signature. The melody is written in eighth and sixteenth notes, featuring some triplets and slurs. The second and third staves continue the melodic line with similar rhythmic patterns and phrasing.

## (Small Guitar solo)

The guitar solo section consists of two staves of music. The first staff begins with a bass clef, a key signature of two sharps (D major), and a 4/4 time signature. The melody is written in eighth and sixteenth notes, featuring some triplets and slurs. The second staff continues the melodic line. The final staff of this section shows a whole rest on the bass clef staff, indicating a full measure of silence.

## (Chorus out)

The chorus out section consists of four staves of music. The first staff begins with a bass clef, a key signature of two sharps (D major), and a 4/4 time signature. The melody is written in eighth and sixteenth notes, featuring some triplets and slurs. The second and third staves continue the melodic line with similar rhythmic patterns and phrasing. The fourth staff concludes the section with a final cadence.