

# Straight On

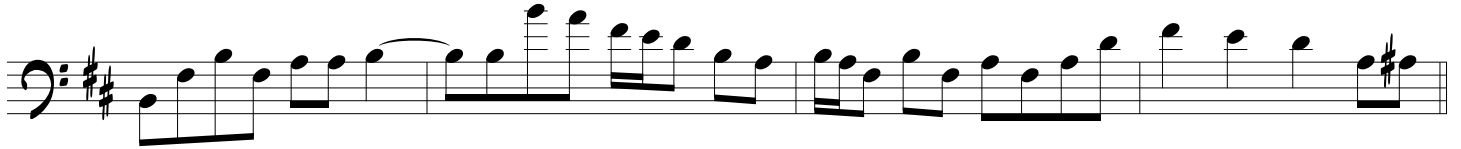
- A. Wilson  
- N. Wilson  
- S. Ennis

From the album "Dog & Butterfly"  
by Heart (1978)

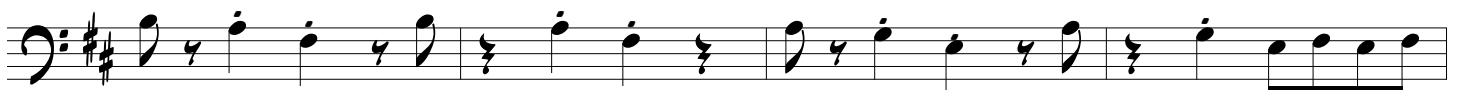
Bass part by  
Steve Fossen

$\text{♩} = 116$  (Intro)

Elec.  
Bass



(1st Verse)



(Chorus)



# Straight On



## (2nd Verse)



## (Chorus)



## (Bridge)



# Straight On

## (Guitar Solo)

Musical notation for the Guitar Solo section, consisting of three staves of music in bass clef with a key signature of two sharps (F# and C#). The first staff begins with a whole note chord followed by eighth notes. The second staff features a series of eighth notes with rests. The third staff includes eighth notes, quarter notes, and a triplet of eighth notes.

## (Chorus)

Musical notation for the Chorus section, consisting of seven staves of music in bass clef with a key signature of two sharps (F# and C#). The first staff starts with a whole note chord. The second staff has a whole note chord followed by eighth notes. The third staff is a rhythmic pattern of eighth notes with rests. The fourth staff continues with eighth notes and quarter notes. The fifth staff has eighth notes and quarter notes. The sixth staff features eighth notes and quarter notes. The seventh staff continues with eighth notes and quarter notes.

# Straight On



## (Outro)

