

The Way

From the album "Experience: Jill Scott 826+"

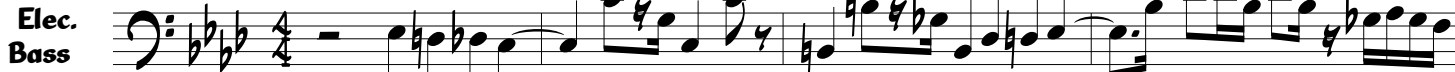
by Jill Scott (2001)

- J. Scott
- A. Harris

Bass part by
Thaddaeus Tribbett

♩ = 75 (OP = Octave Pedal)

(Intro)



(OP is on)



(OP is off)

(1st Verse)



(OP is on)

(Chorus)



The Way

First line of musical notation in bass clef, key signature of three flats (B-flat, E-flat, A-flat), and 4/4 time signature. The line contains several measures of music, including a triplet of eighth notes.

(2nd Verse)

Second line of musical notation, starting with a triplet of eighth notes. Below the first measure of the triplet is the number '3' and the text '(OP is off)'.

Third line of musical notation, continuing the bass line with various rhythmic patterns and accidentals.

Fourth line of musical notation, featuring a mix of eighth and sixteenth notes.

Fifth line of musical notation, ending with the text '(OP is on)' below the final measure.

(Chorus)

Sixth line of musical notation, starting the chorus section with a triplet of eighth notes and a trill.

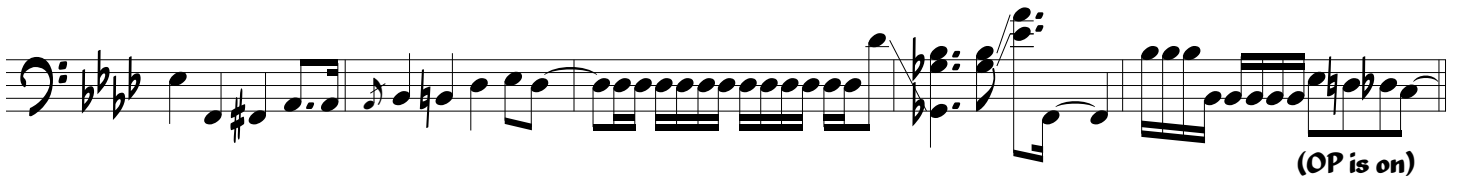
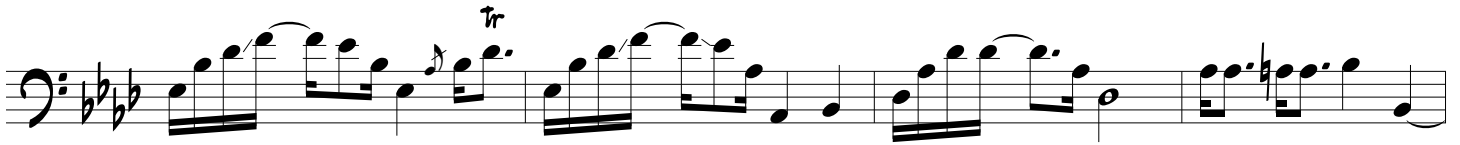
Seventh line of musical notation, continuing the chorus with various rhythmic patterns.

Eighth line of musical notation, concluding the chorus with a trill.

The Way



(Sax Solo)



(Chorus)



The Way

First staff of music in bass clef, key signature of three flats (B-flat major/D-flat minor), and 4/4 time signature. It begins with a quarter note G2, followed by a quarter note F2, a quarter note E2, and a quarter note D2. The melody continues with eighth and sixteenth notes, ending with a quarter note G2. The text "(OP is off)" is written below the staff.

(*slide from Ab and Bb is tapped with the right hand)

Second staff of music in bass clef, key signature of three flats, and 4/4 time signature. It starts with a whole note G2, marked with a "9" above it. The melody continues with eighth and sixteenth notes, ending with a quarter note G2. The text "(OP is on)" is written below the staff.

Third staff of music in bass clef, key signature of three flats, and 4/4 time signature. It begins with a quarter note G2, followed by a quarter note F2, a quarter note E2, and a quarter note D2. The melody continues with eighth and sixteenth notes, ending with a quarter note G2.

Fourth staff of music in bass clef, key signature of three flats, and 4/4 time signature. It begins with a quarter note G2, followed by a quarter note F2, a quarter note E2, and a quarter note D2. The melody continues with eighth and sixteenth notes, ending with a quarter note G2.

Fifth staff of music in bass clef, key signature of three flats, and 4/4 time signature. It begins with a quarter note G2, followed by a quarter note F2, a quarter note E2, and a quarter note D2. The melody continues with eighth and sixteenth notes, ending with a quarter note G2.

Sixth staff of music in bass clef, key signature of three flats, and 4/4 time signature. It begins with a quarter note G2, followed by a quarter note F2, a quarter note E2, and a quarter note D2. The melody continues with eighth and sixteenth notes, ending with a quarter note G2. The text "(OP is off)" is written below the staff.

Seventh staff of music in bass clef, key signature of three flats, and 4/4 time signature. It begins with a quarter note G2, followed by a quarter note F2, a quarter note E2, and a quarter note D2. The melody continues with eighth and sixteenth notes, ending with a quarter note G2. A trill is indicated above the final note with a wavy line and the word "tr".