

American Pie

From the album "American Pie"
by Don McLean (1971)

- D. McLean

Bass part by
David Spinozza

(1st Verse ad lib.) (Chorus slightly faster)

Elec. Bass

16 9

cresc.

mf

♩ = 138 (2nd Verse)

American Pie

(Chorus)

Musical notation for the Chorus of American Pie, consisting of three staves of bass clef music in G major. The first staff contains the first two measures, the second staff contains the next two measures, and the third staff contains the final two measures, ending with a double bar line.

(3rd Verse)

Musical notation for the 3rd Verse of American Pie, consisting of seven staves of bass clef music in G major. The first staff contains the first two measures, the second staff contains the next two measures, the third staff contains the next two measures, the fourth staff contains the next two measures, the fifth staff contains the next two measures, the sixth staff contains the next two measures, and the seventh staff contains the final two measures, ending with a double bar line.

American Pie

The first two staves of the musical score are in bass clef with a key signature of one sharp (F#). The first staff contains four measures of music, primarily using quarter and eighth notes. The second staff continues the melody with similar rhythmic patterns, including some beamed eighth notes and a final measure with a double bar line.

(Chorus)

The chorus section consists of four staves of music. The first staff begins with a double bar line and contains four measures. The second staff continues with four measures, featuring a prominent melodic line with eighth notes. The third staff has four measures, including a measure with a fermata over a half note. The fourth staff concludes the chorus with four measures, ending with a double bar line.

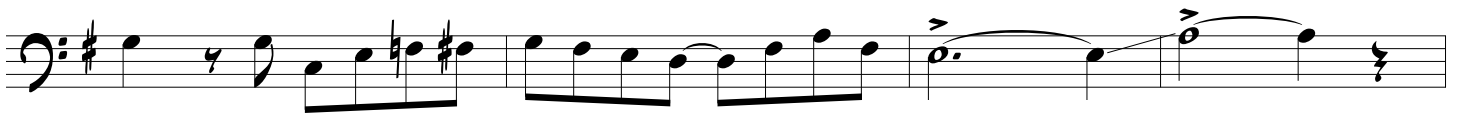
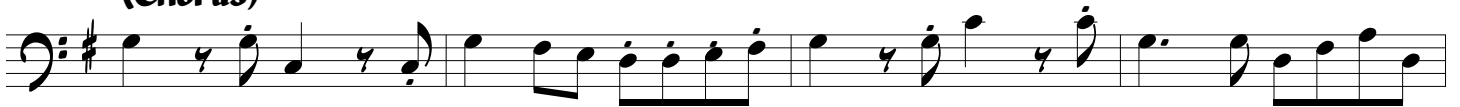
(4th Verse)

The 4th verse section consists of four staves of music. The first staff begins with a double bar line and contains four measures. The second staff continues with four measures, showing some chromatic movement. The third staff has four measures, including a measure with a fermata. The fourth staff concludes the verse with four measures, ending with a double bar line.

American Pie



(Chorus)



(5th Verse)



American Pie

The main body of the bass line consists of seven staves of music in the key of D major (one sharp). The first staff begins with a treble clef and a key signature of one sharp. The music features a variety of rhythmic patterns, including eighth and sixteenth notes, and rests. The second staff contains a sequence of eighth notes. The third staff features a series of dotted half notes with accents. The fourth staff has a mix of eighth and sixteenth notes. The fifth staff continues with eighth notes and rests. The sixth staff features a sequence of eighth notes. The seventh staff concludes with a double bar line.

(Chorus)

The chorus section consists of two staves of music. The first staff begins with a treble clef and a key signature of one sharp. It features a sequence of eighth notes and rests. The second staff continues with eighth notes and rests, ending with a double bar line.

(6th Verse ad lib.)

16

(Chorus ad lib.)

19

The ad libitum sections consist of two staves of music. The first staff begins with a treble clef and a key signature of one sharp. It features a sequence of eighth notes and rests. The second staff continues with eighth notes and rests, ending with a double bar line.