

Barracuda

From the album "Little Queen"
by Heart (1977)

Bass part by
Steve Fossen

- A. Wilson
- N. Wilson
- M. Derosier
- R. Fisher

$\text{♩} = 140$ (Intro)

Elec. Bass



The first line of the bass part begins with a 4-measure rest, indicated by a '4' above the staff. It then enters with a steady eighth-note pattern in the key of D major (one sharp) and 4/4 time.



The second line continues the eighth-note pattern from the first line.



The third line continues the eighth-note pattern from the previous lines.

(1st Verse)



The first line of the first verse features a mix of quarter and eighth notes, with a change in time signature from 4/4 to 3/4.



The second line of the first verse continues the melodic line with a mix of quarter and eighth notes.



The third line of the first verse continues the melodic line with a mix of quarter and eighth notes.

(Chorus)



The first line of the chorus features a mix of quarter and eighth notes, with a change in time signature from 3/4 to 4/4.



The second line of the chorus continues the melodic line with a mix of quarter and eighth notes.



The third line of the chorus continues the melodic line with a mix of quarter and eighth notes.

Barracuda



(2nd Verse)



(Chorus)



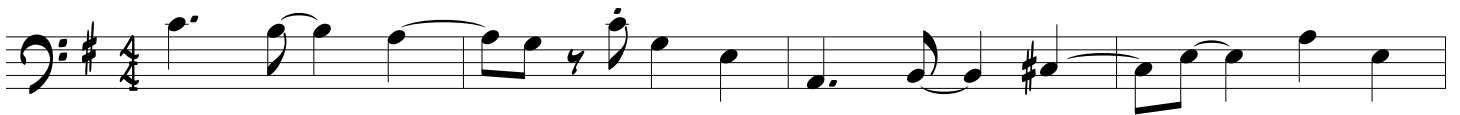
(Bridge)



Barracuda



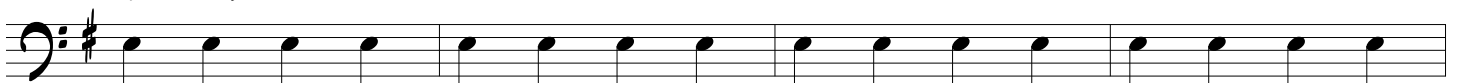
(Guitar Solo)



(Chorus)



(Outro)



Barracuda

The image displays a musical score for the bass line of the song "Barracuda". The score is written in G major (one sharp) and 4/4 time. It consists of ten staves of music. The first seven staves feature a consistent eighth-note bass line. The eighth staff introduces a change in rhythm with quarter notes and eighth notes. The ninth and tenth staves continue with quarter notes and eighth notes, including some notes with accents.