

# Labour of Love

From the album "Beneath the Surface"  
by Incognito (1996)

- J.P. Maunick  
- G. Harvey

Bass part by  
Randy Hope-Taylor

$\text{♩} = 80$

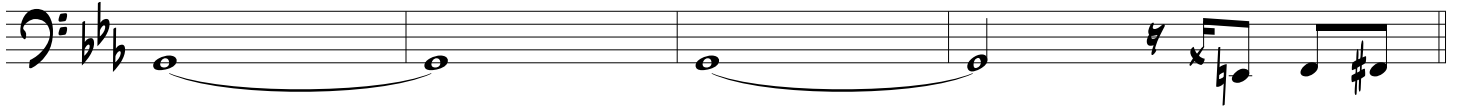
Elec.  
Bass

## (1st Verse)

## (2nd Verse)

## (Chorus)

# Labour of Love



## (3rd Verse)



## (Chorus)



# Labour of Love

## (Trumpet Solo)

The Trumpet Solo section consists of two staves of music. The first staff contains four measures of music, featuring eighth and quarter notes with various rests. The second staff contains four measures, including a complex rhythmic pattern of sixteenth notes in the final measure, marked with accents (>).

## (Chorus)

The Chorus section consists of seven staves of music. The first staff contains four measures. The second staff contains four measures with a mix of eighth and sixteenth notes. The third staff contains four measures with a similar rhythmic pattern. The fourth staff contains four measures. The fifth staff contains four measures with a more complex rhythmic pattern. The sixth staff contains four measures. The seventh staff contains four measures, ending with a final cadence marked with an accent (^).

# Labour of Love

