

Pack My Jack

From the album "Shades"

by J.J. Cale (1981)

- J.J. Cale

Bass part by
Emery Gordy

♩ = 113 Swing ♩ = ♩³ (Guitar solo)

Elec.
Bass

The electric bass part is written in 4/4 time with a key signature of one flat (Bb). It consists of seven staves of music. The first staff begins with a treble clef, a key signature of one flat, and a 4/4 time signature. The notation includes quarter notes, eighth notes, and a triplet of eighth notes. The piece concludes with a double bar line.

(Piano solo)

The piano solo part is written in 4/4 time with a key signature of one flat (Bb). It consists of three staves of music. The notation includes quarter notes, eighth notes, and a triplet of eighth notes. The piece concludes with a double bar line.

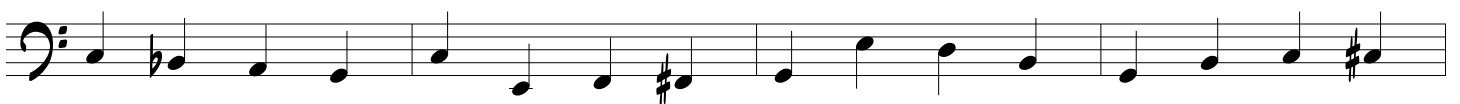
Pack My Jack



(Guitar solo)



(1st Verse)



Pack My Jack

(2nd Verse)

Three staves of musical notation for the 2nd Verse. The first staff begins with a bass clef and a key signature of one flat (Bb). The melody consists of quarter and eighth notes with various accidentals (sharps and flats). The second and third staves continue the melodic line, ending with double bar lines.

(Piano solo)

Three staves of musical notation for the Piano solo section. The first staff begins with a bass clef and a key signature of one flat. The melody features a mix of quarter, eighth, and sixteenth notes, with some slurs and accidentals. The section concludes with double bar lines on the third staff.

(3rd Verse)

Three staves of musical notation for the 3rd Verse. The first staff begins with a bass clef and a key signature of one flat. The melody is composed of quarter and eighth notes. The second and third staves continue the melodic line, ending with double bar lines.

Pack My Jack

(Guitar Solo)

The guitar solo consists of ten staves of music. The first nine staves contain a variety of rhythmic patterns, including eighth notes, sixteenth notes, and rests. The final staff is labeled 'Straight 8ths' and features a continuous eighth-note pattern.