

Twilight Zone

- J. Graydon
- B. Hermann
- A. Paul

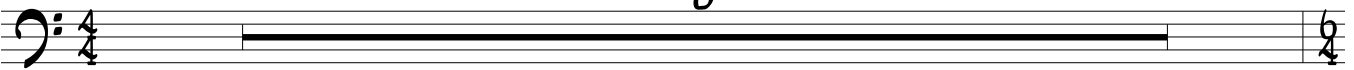
From the album "Extensions"
by Manhattan Transfer (1979)

Bass part by
David Hungate

♩ = 128 (Intro)

8

Elec. Bass



Musical staff for the first line of the bass part, showing a whole rest for 8 measures.



Musical staff for the second line of the bass part, featuring a rhythmic pattern of eighth notes and quarter notes.



Musical staff for the third line of the bass part, continuing the rhythmic pattern.

(Vocal Intro)



Musical staff for the fourth line of the bass part, starting the vocal introduction with a steady eighth-note pattern.



Musical staff for the fifth line of the bass part, continuing the vocal introduction.



Musical staff for the sixth line of the bass part, continuing the vocal introduction.



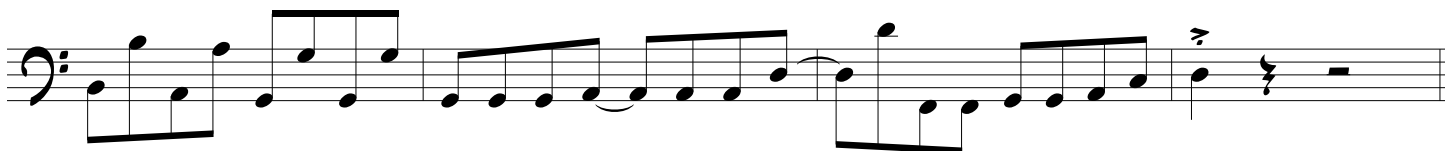
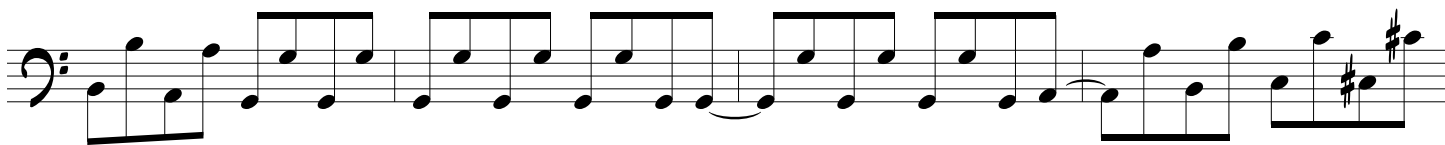
Musical staff for the seventh line of the bass part, continuing the vocal introduction.

(1st Verse)



Musical staff for the eighth line of the bass part, starting the first verse with a steady eighth-note pattern.

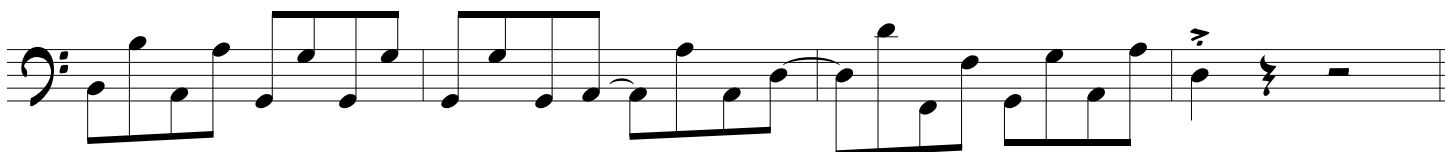
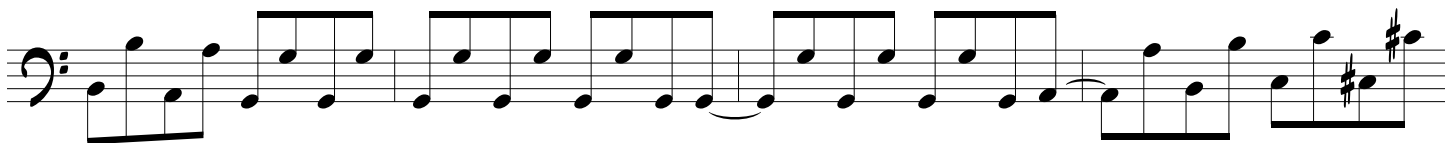
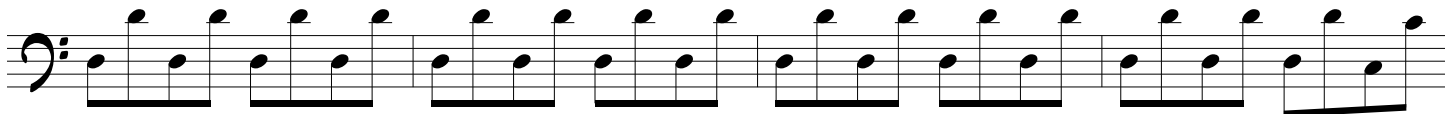
Twilight Zone



(Chorus)



(2nd Verse)



Twilight Zone

(Chorus)

Musical notation for the first Chorus section, consisting of two staves. The first staff contains a sequence of eighth notes in a descending pattern, starting on G2 and ending on G1. The second staff contains a sequence of eighth notes in an ascending pattern, starting on G1 and ending on G2. The key signature has one flat (Bb).

(Interlude)

Musical notation for the Interlude section, consisting of a single staff. It features a sequence of notes: a half note G1, a quarter note F1, a quarter note E1, a quarter note D1, a quarter note C1, a quarter note Bb1, a quarter note A1, and a quarter note G1. A slur covers the last four notes.

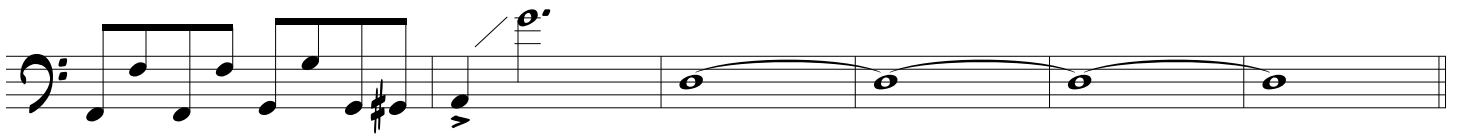
(Guitar Solo)

Musical notation for the Guitar Solo section, consisting of four staves. The first staff contains a sequence of eighth notes in a descending pattern, starting on G2 and ending on G1. The second staff contains a sequence of eighth notes in an ascending pattern, starting on G1 and ending on G2. The third staff contains a sequence of eighth notes in a descending pattern, starting on G2 and ending on G1. The fourth staff contains a sequence of eighth notes in an ascending pattern, starting on G1 and ending on G2. The key signature has one flat (Bb).

(Chorus)

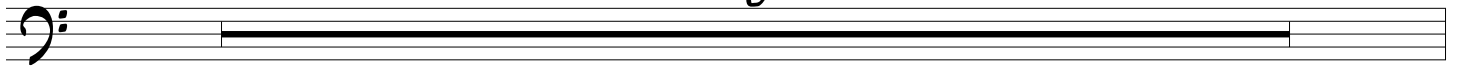
Musical notation for the second Chorus section, consisting of two staves. The first staff contains a sequence of eighth notes in a descending pattern, starting on G2 and ending on G1. The second staff contains a sequence of eighth notes in an ascending pattern, starting on G1 and ending on G2. The key signature has one flat (Bb).

Twilight Zone



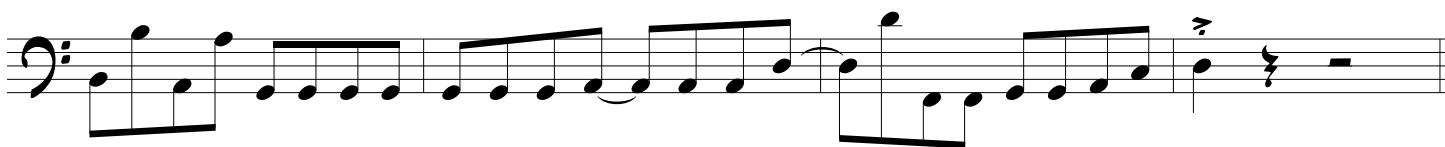
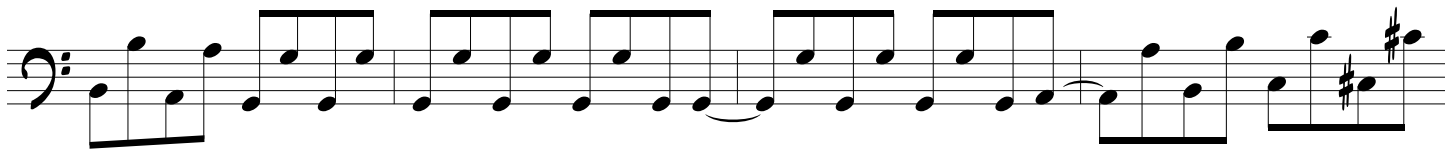
(Guitar Interlude)

8



Twilight Zone

(3rd Verse)



(Chorus out)



Twilight Zone



(Fade out)

