

Sunday Morning

From the album "Songs About Jane"
by Maroon 5 (2004)

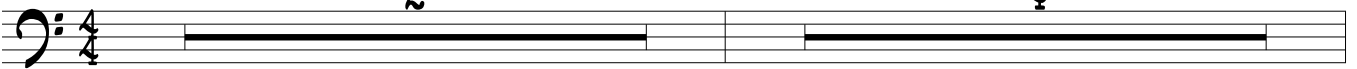
- A. Levine
- J. Carmichael

Bass part by
Michael Allen Madden

♩ = 88 (Drums)

(Drums and Keyboards)

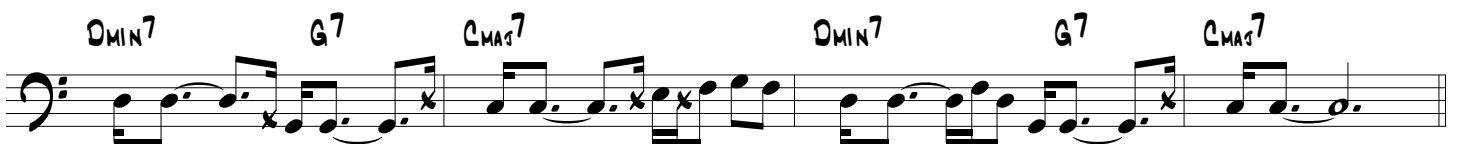
Elec.
Bass



(1st Verse)



(Chorus)



Sunday Morning

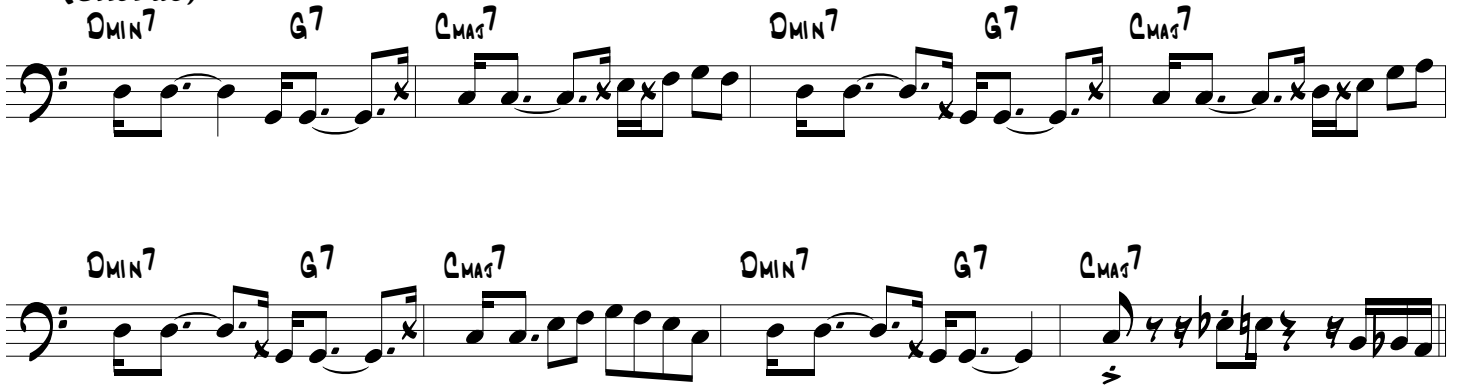
(2nd Verse)

Chord progression for the 2nd Verse: DMIN7, G7, CMAG7, DMIN7, G7, CMAG7.



(Chorus)

Chord progression for the Chorus: DMIN7, G7, CMAG7, DMIN7, G7, CMAG7.



(Bridge)

Musical notation for the Bridge, consisting of two staves of bass clef music.



(3rd Verse)

Chord progression for the 3rd Verse: DMIN7, G7, CMAG7, DMIN7, G7, CMAG7.



Sunday Morning

(Chorus)

This page contains the bass line for the chorus of the song 'Sunday Morning'. It consists of seven staves of music, each starting with a bass clef and a common time signature. The notes are written in a rhythmic pattern, with some notes marked with an 'x' to indicate a muted or specific articulation. Above each staff are chord symbols: DMIN7, G7, and CMAJ7, which are repeated in a sequence across the staves. The final staff ends with a double bar line and the text '(Fade Out)'.