

Paradise By The Dashboard Light

From the album "Bat Out of Hell"

by Meatloaf (1976)

Bass part by
Kasim Sulton

- J. Steinman

$\text{♩} = 174$ $\text{♪} = \text{♪}^3$

Elec.
Bass

Musical staff for electric bass. It begins with a 4-measure rest, followed by a 2-measure rest. A fermata is placed over the second measure of the rest.

Musical staff for electric bass, first line of the main melody. It consists of a continuous eighth-note pattern in 4/4 time.

(1st Verse)

Musical staff for electric bass, second line of the main melody. It continues the eighth-note pattern with some melodic variation.

Musical staff for electric bass, third line of the main melody. It continues the eighth-note pattern.

Musical staff for electric bass, fourth line of the main melody. It continues the eighth-note pattern.

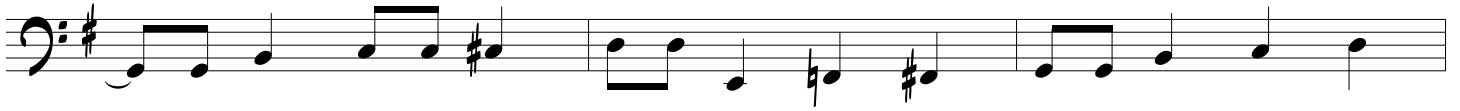
Musical staff for electric bass, fifth line of the main melody. It continues the eighth-note pattern.

(Bridge)

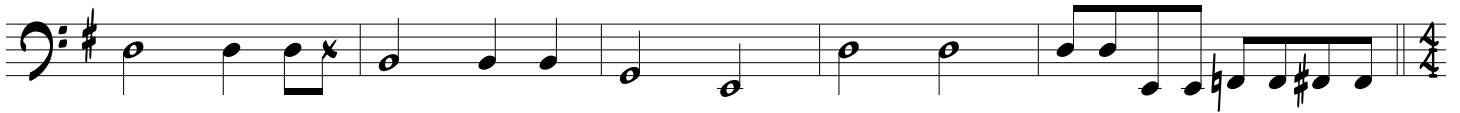
Musical staff for electric bass, first line of the bridge. It features a slower, more melodic eighth-note pattern.

Musical staff for electric bass, second line of the bridge. It continues the melodic eighth-note pattern.

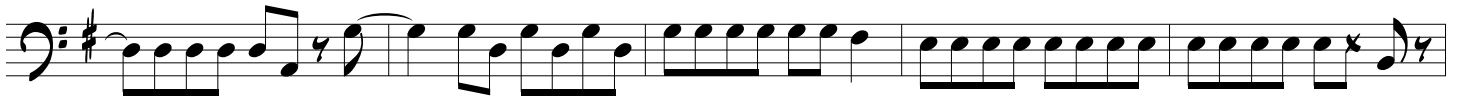
Paradise By The Dashboard Light



(Chorus)



Paradise By The Dashboard Light



(2nd Verse)



(Bridge)



Paradise By The Dashboard Light

The first two staves of the musical score are written in bass clef with a key signature of one sharp (F#). The first staff contains a sequence of eighth and quarter notes. The second staff continues the melody with eighth notes and quarter notes, ending with a double bar line and a repeat sign.

(Chorus)

The chorus section consists of seven staves of musical notation in bass clef with a key signature of one sharp (F#). The first staff begins with a 2/2 time signature and features a dotted half note followed by a quarter note. The second staff continues with a half note and a quarter note. The third staff shows a half note and a quarter note. The fourth staff contains a half note and a quarter note. The fifth staff features a half note and a quarter note. The sixth staff has a half note and a quarter note. The seventh staff concludes the chorus with a half note and a quarter note.

(3rd Verse)

Paradise By The Dashboard Light

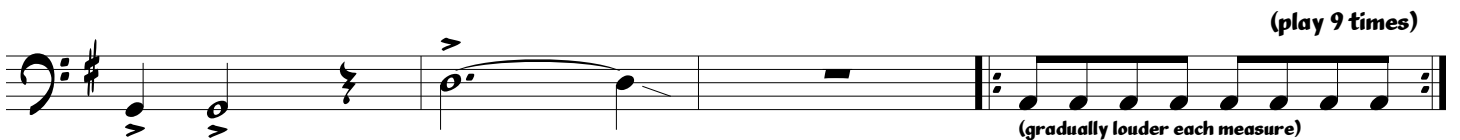
(Slower) ♩ = 127

(play 4 times)

(Straight Funk) ♩ = ♩

(play 12 times)

Paradise By The Dashboard Light



Paradise By The Dashboard Light



Paradise By The Dashboard Light

