

Dark Necessities

From the album "The Getaway"
by Red Hot Chilli Peppers (2016)

Bass part by
Flea

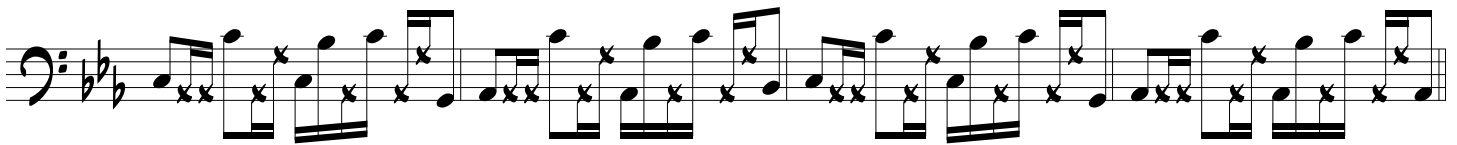
- B. Burton - Flea
- A. Kiedis - J. Klinghoffer
- C. Smith

♩ = 92 (Intro)



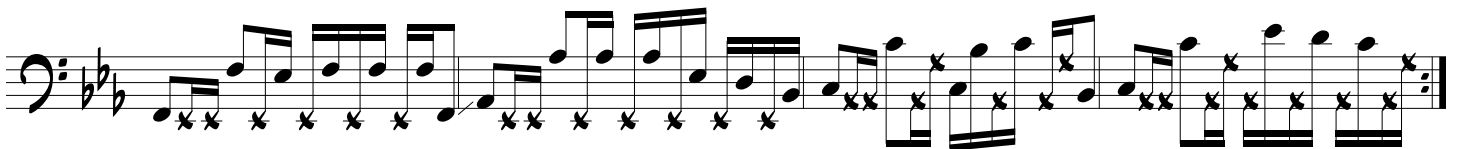
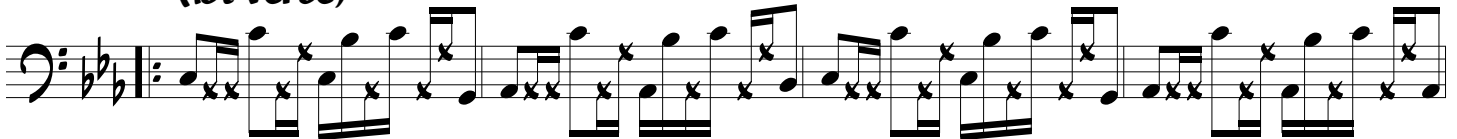
Elec.
Bass

cresc.
(Finger Style)



(Slap & Pop)

(1st Verse)



(Chorus)



(Finger Style)



Dark Necessities

(2nd Verse)

(Slap & Pop)

(Chorus)

(Finger Style)

(Bridge)

Dark Necessities

(3rd Verse)

First line of musical notation for the 3rd Verse, featuring a bass clef, a key signature of two flats, and a 4/4 time signature. The notation includes eighth and sixteenth notes with 'x' marks above them, indicating slaps or pops.

(Slap & Pop)

Second line of musical notation for the 3rd Verse, continuing the rhythmic pattern with slaps and pops.

(Chorus)

First line of musical notation for the Chorus, featuring a bass clef, a key signature of two flats, and a 4/4 time signature. The notation includes eighth and sixteenth notes, with some notes beamed together.

(Finger Style)

Second line of musical notation for the Chorus, continuing the finger style bass line.

Third line of musical notation for the Chorus, including dynamic markings 'p' (piano) above several notes.

Fourth line of musical notation for the Chorus, concluding the main melodic phrase with dynamic markings 'p'.

(Chorus/Outro)

First line of musical notation for the Chorus/Outro section, repeating the finger style bass line.

Second line of musical notation for the Chorus/Outro section, continuing the finger style bass line.

Third line of musical notation for the Chorus/Outro section, featuring a slower, more melodic line with a long note at the end.