

Do Ya Think I'm Sexy?

(1st Verse)

Musical notation for the first verse, consisting of four staves of bass clef music in a key signature of one flat (Bb). The notation includes quarter notes, eighth notes, and sixteenth notes, with some measures containing rests.

(Chorus)

Musical notation for the chorus, consisting of three staves of bass clef music in a key signature of one flat (Bb). The notation features a consistent rhythmic pattern of eighth notes, often beamed in pairs.

Do Ya Think I'm Sexy?

(Keyboard Solo)

Four staves of musical notation for the Keyboard Solo section. The music is written in bass clef with a key signature of one flat (B-flat). The first staff contains two measures of eighth-note pairs. The second staff contains two measures of eighth-note pairs. The third staff contains two measures of eighth-note pairs. The fourth staff contains two measures of eighth-note pairs.

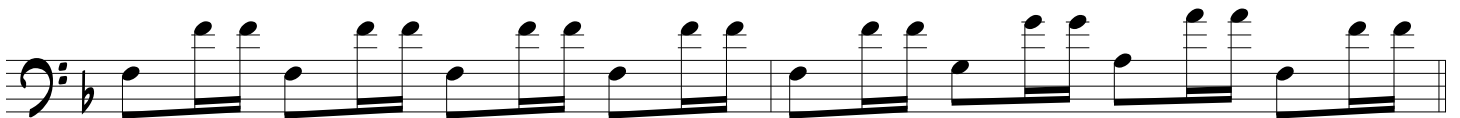
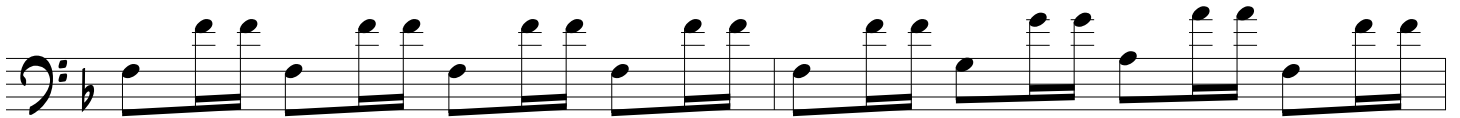
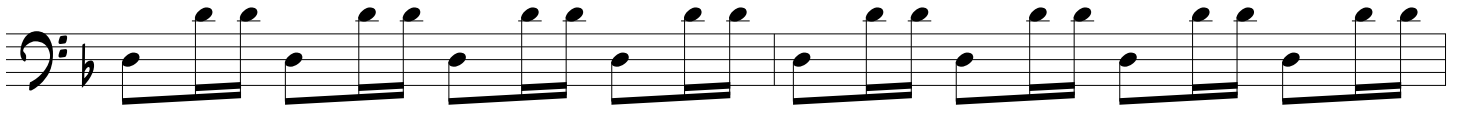
(2nd Verse)

Four staves of musical notation for the 2nd Verse section. The music is written in bass clef with a key signature of one flat (B-flat). The first staff contains two measures of quarter notes and eighth notes. The second staff contains two measures of quarter notes and eighth notes. The third staff contains two measures of quarter notes and eighth notes. The fourth staff contains two measures of quarter notes and eighth notes.

Do Ya Think I'm Sexy?



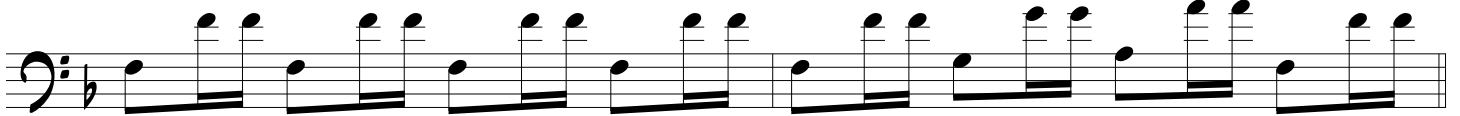
(Chorus)



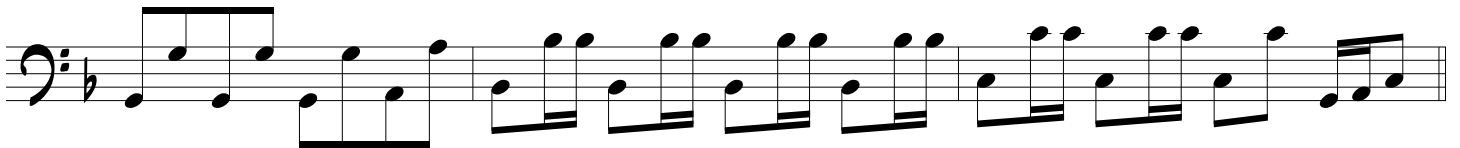
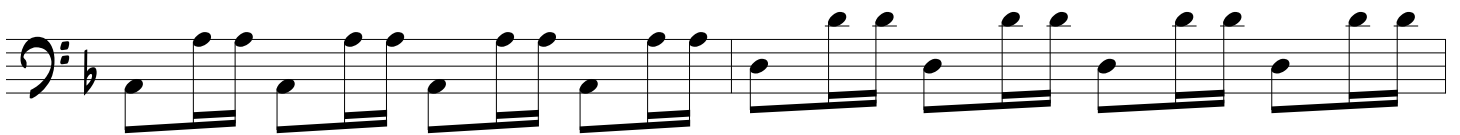
(Keyboard Solo)



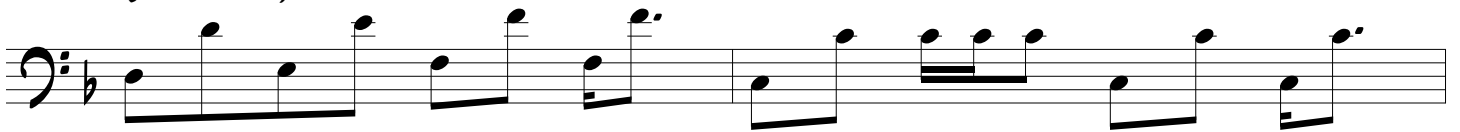
Do Ya Think I'm Sexy?



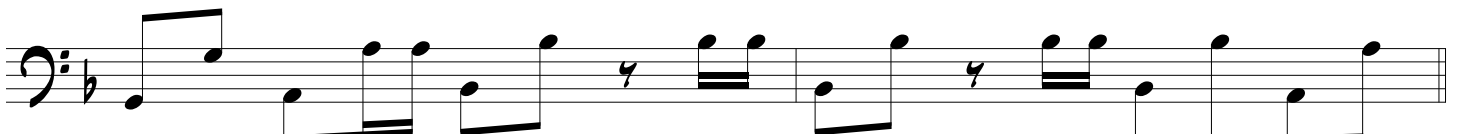
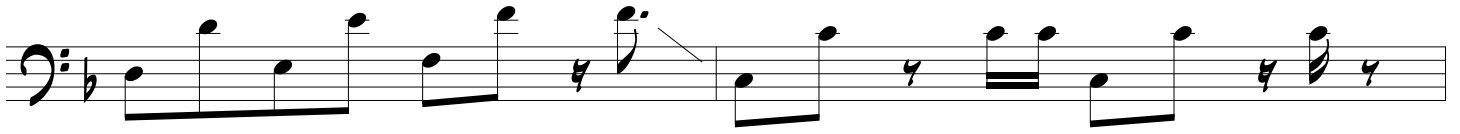
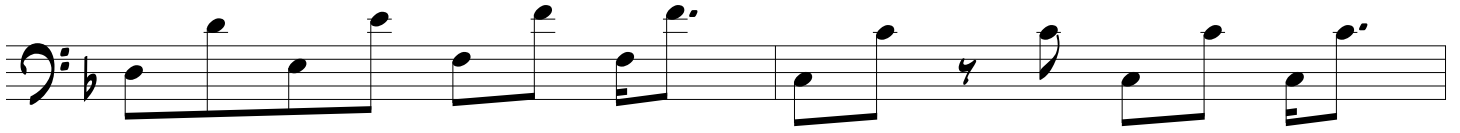
(Bridge)



(Sax Solo)



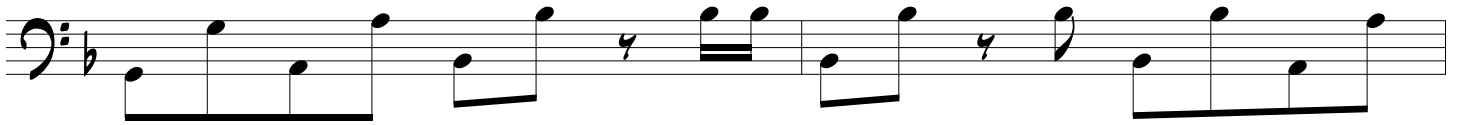
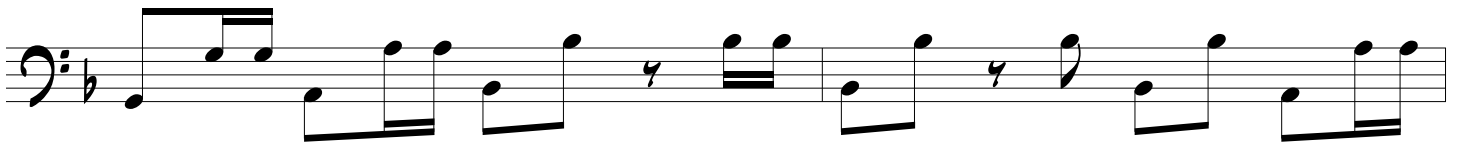
Do Ya Think I'm Sexy?



(3rd Verse)



Do Ya Think I'm Sexy?



(Chorus out)



(Repeat 12xs & fade)

