

Kiss Of Life

- S. Adu
- S. Matthewman
- A. Hale
- P. Denman

From the album "Love Deluxe"
by Sade (1993)

Bass part by
Paul S. Denman

Elec. Bass $\text{♩} = 97$

(1st Verse)

(Chorus)

(2nd Verse)

Kiss Of Life



(Chorus)



(Sax Solo)



(3rd Verse)



Kiss Of Life

(Chorus)

The Chorus section consists of seven staves of music in bass clef, key of D major (two sharps), and 4/4 time. The melody is characterized by a steady eighth-note pattern: G2 (quarter), A2 (quarter), B2 (quarter), C3 (quarter), followed by a quarter rest, then D3 (quarter), E3 (quarter), F3 (quarter), G3 (quarter). This sequence repeats throughout the section. The final two staves include a melodic flourish with a sixteenth-note triplet (A2, B2, C3) and a sixteenth-note pair (D3, E3) before concluding with a double bar line.

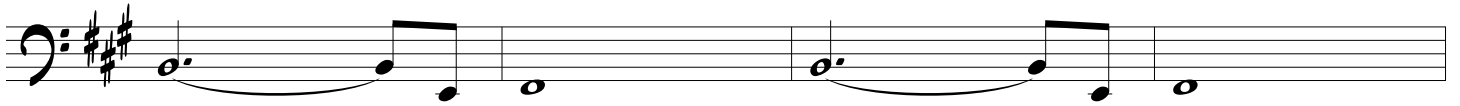
(Sax Solo)

The Sax Solo section consists of two staves of music in bass clef, key of D major, and 4/4 time. The melody follows the same eighth-note pattern as the Chorus: G2 (quarter), A2 (quarter), B2 (quarter), C3 (quarter), quarter rest, D3 (quarter), E3 (quarter), F3 (quarter), G3 (quarter). The section concludes with a double bar line.

(Chorus)

The final Chorus section consists of one staff of music in bass clef, key of D major, and 4/4 time. It begins with a melodic flourish (A2, B2, C3 sixteenth-note triplet, D3, E3 sixteenth-note pair) followed by the eighth-note pattern: G2 (quarter), A2 (quarter), B2 (quarter), C3 (quarter), quarter rest, D3 (quarter), E3 (quarter), F3 (quarter), G3 (quarter). The section concludes with a double bar line.

Kiss Of Life



(Fade out)

