

# Smooth

From the album "Supernatural"  
by Santana (1999)

- I. Shur  
- R. Thomas

Bass part by  
Benny Rietveld

$\text{♩} = 116$

(Intro)

Elec.  
Bass

The Intro section consists of three staves of music. The first staff begins with a whole rest, followed by a half rest, and then a quarter rest. The second staff starts with a quarter note G2, followed by a quarter note A2, a quarter note B2, and a quarter note C3. The third staff continues with a quarter note D3, a quarter note E3, a quarter note F3, and a quarter note G3. The key signature is one sharp (F#) and the time signature is 4/4.

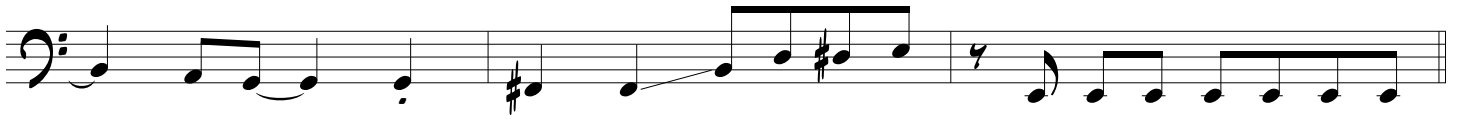
(1st Verse)

The 1st Verse section consists of four staves of music. The first staff begins with a quarter note G2, followed by a quarter note A2, a quarter note B2, and a quarter note C3. The second staff continues with a quarter note D3, a quarter note E3, a quarter note F3, and a quarter note G3. The third staff starts with a quarter note G2, followed by a quarter note A2, a quarter note B2, and a quarter note C3. The fourth staff continues with a quarter note D3, a quarter note E3, a quarter note F3, and a quarter note G3. The key signature is one sharp (F#) and the time signature is 4/4.

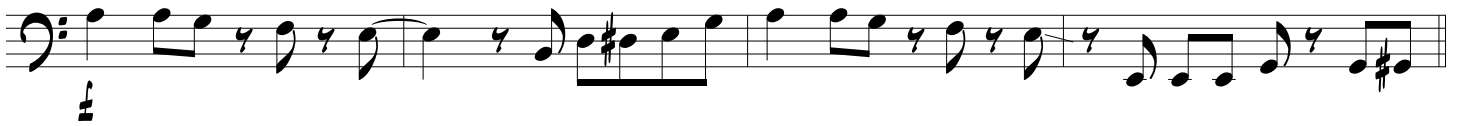
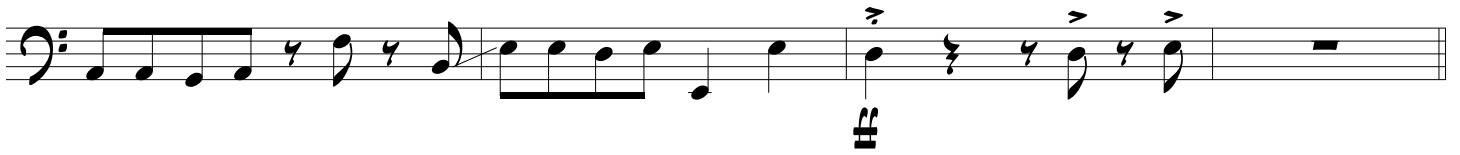
(Pre-Chorus)

The Pre-Chorus section consists of two staves of music. The first staff begins with a quarter note G2, followed by a quarter note A2, a quarter note B2, and a quarter note C3. The second staff continues with a quarter note D3, a quarter note E3, a quarter note F3, and a quarter note G3. The key signature is one sharp (F#) and the time signature is 4/4.

# Smooth



## (Chorus)



## (2nd Verse)



## (Pre-Chorus)



Smooth

Two staves of musical notation in bass clef. The first staff contains four measures of music, starting with a half note G2, followed by quarter notes A2, B2, and C3. The second staff contains six measures, starting with a half note G2, followed by quarter notes A2, B2, and C3, then a quarter rest, a quarter note D3, a quarter note E3, a quarter note F3, a quarter note G3, a quarter note A3, a quarter note B3, and a quarter note C4.

(Chorus)

Two staves of musical notation in bass clef. The first staff contains four measures of music, starting with a half note G2, followed by quarter notes A2, B2, and C3. The second staff contains four measures of music, starting with a half note G2, followed by quarter notes A2, B2, and C3, then a quarter rest, a quarter note D3, a quarter note E3, a quarter note F3, a quarter note G3, a quarter note A3, a quarter note B3, and a quarter note C4.

(Solo)

Five staves of musical notation in bass clef. The first staff contains four measures of music, starting with a half note G2, followed by quarter notes A2, B2, and C3. The second staff contains four measures of music, starting with a half note G2, followed by quarter notes A2, B2, and C3, then a quarter rest, a quarter note D3, a quarter note E3, a quarter note F3, a quarter note G3, a quarter note A3, a quarter note B3, and a quarter note C4. The third staff contains four measures of music, starting with a half note G2, followed by quarter notes A2, B2, and C3. The fourth staff contains four measures of music, starting with a half note G2, followed by quarter notes A2, B2, and C3, then a quarter rest, a quarter note D3, a quarter note E3, a quarter note F3, a quarter note G3, a quarter note A3, a quarter note B3, and a quarter note C4. The fifth staff contains four measures of music, starting with a half note G2, followed by quarter notes A2, B2, and C3, then a quarter rest, a quarter note D3, a quarter note E3, a quarter note F3, a quarter note G3, a quarter note A3, a quarter note B3, and a quarter note C4.

# Smooth

## (Chorus)

Two staves of bass clef musical notation for the Chorus. The first staff contains the first two measures, and the second staff contains the next two measures. The music features a steady eighth-note bass line with occasional sixteenth-note patterns and rests.

## (Outro)

Nine staves of bass clef musical notation for the Outro. The first seven staves continue the eighth-note bass line pattern from the Chorus. The eighth staff introduces a more complex rhythmic pattern with sixteenth-note runs and a trill over a note. The ninth staff concludes the piece with a final eighth-note pattern.