

Rikki Don't Lost That Number

- W. Becker
- D. Fagen

From the album "Pretzel Logic"
by Steely Dan (1974)

Bass part by
Walter Becker

$\text{♩} = 116$

Elec.
Bass

The first two lines of musical notation are in bass clef, with a key signature of three sharps (F#, C#, G#) and a 4/4 time signature. The tempo is marked as quarter note = 116. The first line contains four measures of music, and the second line contains three measures, ending with a double bar line.

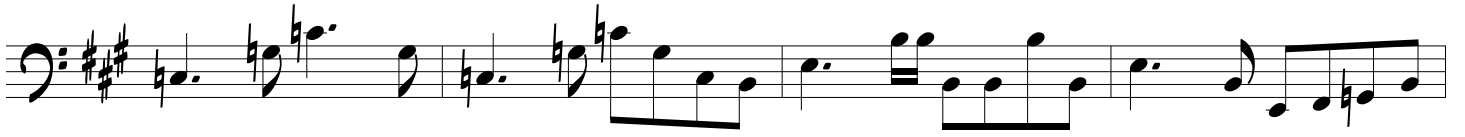
(1st Verse)

The first verse consists of four lines of musical notation in bass clef, with a key signature of three sharps and a 4/4 time signature. The first three lines each contain four measures, and the fourth line contains three measures, ending with a double bar line.

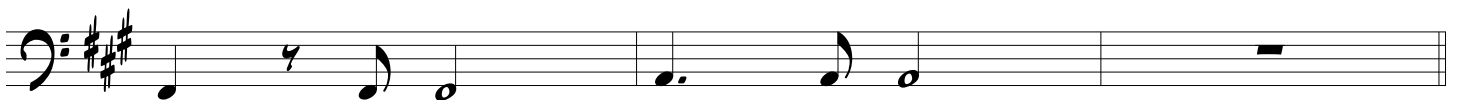
(Chorus)

The chorus is a single line of musical notation in bass clef, with a key signature of three sharps and a 4/4 time signature. It contains four measures of music, ending with a double bar line.

Rikki Don't Lose That Number



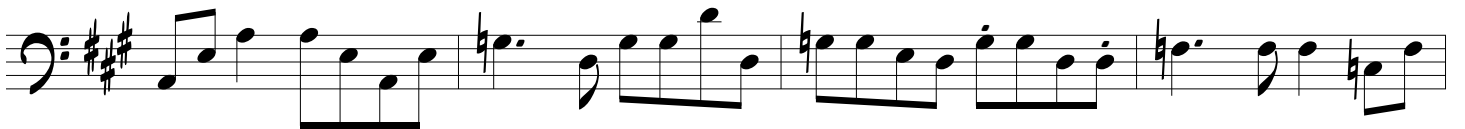
(2nd Verse)



Rikki Don't Lose That Number



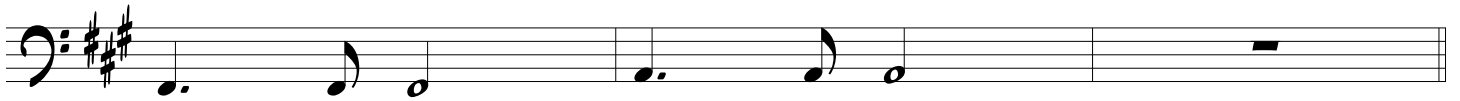
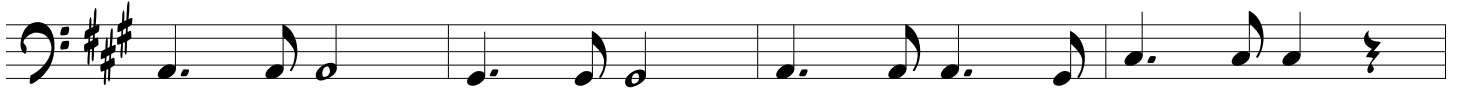
(Guitar Solo)



Rikki Don't Lose That Number



(Bridge)



(Chorus)



(Outro)

