

# Disco Inferno

From the album "Disco Inferno"  
by Trammps (1976)

- L. Green  
- R. Kersey

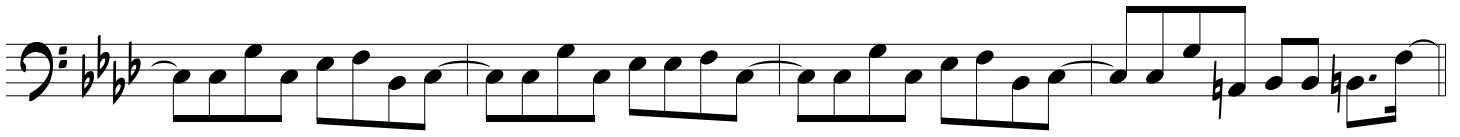
Bass part by  
Ronald Baker

**Elec. Bass**  $\text{♩} = 129$  (Intro)

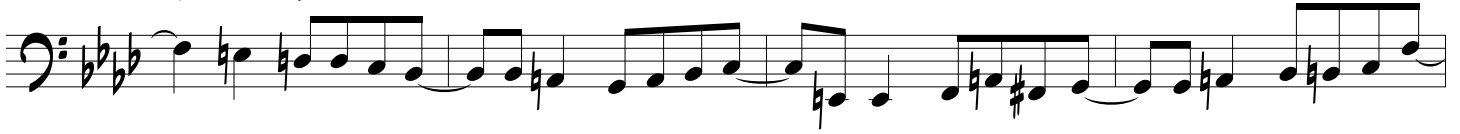
## (Chorus)

## (1st Verse)

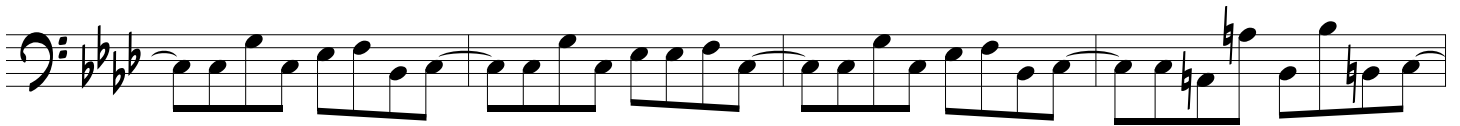
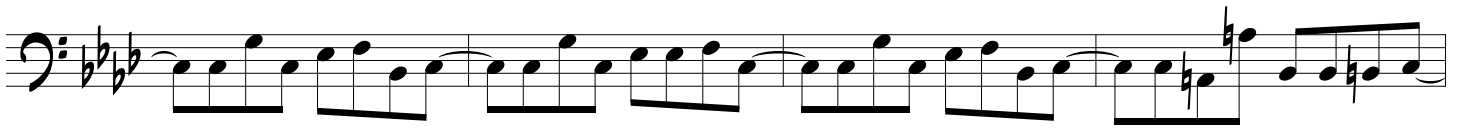
# Disco Inferno



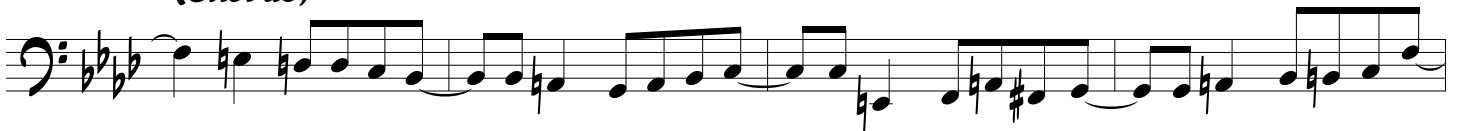
## (Chorus)



## (2nd Verse)



## (Chorus)



# Disco Inferno

## (Bridge)

Two staves of musical notation for the Bridge section. The first staff contains a melodic line with eighth and sixteenth notes. The second staff contains a bass line with eighth and sixteenth notes, including a double bar line and a fermata over a quarter note.

## (3rd Verse)

Four staves of musical notation for the 3rd Verse section. Each staff shows a consistent melodic and bass line pattern, primarily consisting of eighth and sixteenth notes.

## (Chorus/Outro)

Two staves of musical notation for the Chorus/Outro section. The notation features a mix of eighth and sixteenth notes with some chromatic movement.

## (fade)

One staff of musical notation for the fade section, showing a continuation of the melodic and bass lines from the previous section.